



One To World

# ANNUAL REPORT 2022



Advancing international  
understanding in the  
Fulbright tradition

# A SPECIAL MESSAGE FROM OUR LEADERS



Dear friends,

In looking back over the 2021-2022 year, the first word that comes to mind is transformation.

It's been difficult to navigate our ever-changing circumstances throughout the COVID-19 pandemic. And unfortunately, the pandemic is not the only global crisis we are facing right now.



In a world that feels more divided than ever, we need to work together to create and empower generations of global citizens who will build a more just and equitable world. And we each need to make a commitment to act and create lasting, positive change.

At One To World, we do that by creating opportunities every day for cross-cultural dialogue. We facilitate face-to-face experiences where people of different backgrounds and cultures can share ideas, challenge assumptions, and ask questions. Each moment in our programs—from a holiday dinner with international students and a local resident, to a Fulbright scholar sharing their customs with K-12 students, to a corporate leader sharing their expertise in international business—creates a change in people's hearts and minds. That is what makes One To World so special.

That work would not be possible without our incredible support system of friends, members, hosts, alumni, and donors. We want to thank you so much for your commitment and time over the last year. We hope as you read through the rest of this report, you know how vital you are to each and every success.

Just as we share so many challenges, we also share a world of possibility, promise, and opportunity. We look forward to a year of transformation ahead with you.

Sincerely,



Creighton Condon  
Board Chair



Jen E. Clarke  
Executive Director



# PROGRAM SNAPSHOT



One To World has three core areas of work: 1) enrichment programs for international students and Fulbright scholars; 2) professional development for staff at academic institutions; and 3) workshops for underresourced, K-12 students in New York City. Together, these programs create a sense of community among people of different countries, cultures, and backgrounds.

**Career Readiness:** International students engage with local professionals in employment workshops, job shadowing, and more to gain the tools needed to succeed in business—both in the U.S., and abroad.



**Community Service Projects:** Through partnerships with other local nonprofits, international students have the chance to give back to New York City and engage in the American tradition of volunteerism.

**Conversations with World Leaders:** Fulbright scholars meet leaders in business, education, and philanthropy for an intimate exchange of ideas and insights across cultures.

**Dinner Diplomats & Holiday Hosting:** Locals in New York, New Jersey, Connecticut, and Pennsylvania host students in their homes for dinner, building connections and creating opportunities for New Yorkers and international students alike to learn more about international cultures, customs, and people.

**Foreign Affairs Conferences:** Our delegation of international students brings first-hand global perspectives to debates on American foreign policy with cadets and midshipmen at the U.S. Military and Naval Academies.




**Global Classroom:** International students and our expert staff provide local K-12 youth with meaningful opportunities to build their knowledge of and appreciation for other cultures, and increase their understanding of global crises—and the role they can play to help solve them.

**Membership Meetings:** Staff at higher education academic institutions receive professional development from experts to increase their capacity to best support international students.

**Social Gatherings:** Get-togethers at global restaurants, game nights, visits to cultural institutions, and group outings to sporting events allow our next generation of global leaders to experience American culture and connect with one another.

**Tours:** Local guides take our international students for curated tours throughout the city, allowing them to experience the rich tapestry that only New York has to offer.



**"I think the word culture means...everybody is different and it's your origin story. It's what makes you, you." -Third grader & *Global Classroom* participant**

**"Students are the future of every culture, so I was happy to discover classrooms full of energetic, very participative, curious, critical thinking and multicultural kids."  
-Fulbright student from Bulgaria & *Global Guide***

**"My students were more aware of cultural differences after their *Global Classroom* sessions, and used what they learned in other lessons." -Third grade teacher**

**"Some of the children at the end wanted to visit India, my country. That was most rewarding, knowing that despite stating both the good and the bad sides of my country, I was able to create the interest in them to visit and learn more."  
-Fulbright student from India & *Global Guide***



# OUR IMPACT

One To World directly supported more than 2,300 people in 2021-2022. These programs foster the next generation of global leaders and global citizens, allowing us to break down barriers to build a better world.



50 **Global Classroom** workshops with 3 school and after-school partners.

100+ K-12 students who learned how to investigate, recognize, communicate, take action, and reflect on global issues and cultures.

68 international students from 40 different countries were trained as Global Guides, bringing their cultures and knowledge to underresourced K12 students.

600 staff from 39 universities participated in our monthly professional development meetings, ensuring that our international students feel academically engaged and supported.



100+ local residents opened their homes and businesses to our international students, ensuring they feel connected to their new neighbors and friends in the New York area.



1,500+ Fulbright scholars and international students attended our tours, community service events, social gatherings, meals with local hosts, and more.

# THANK YOU TO OUR SUPPORTERS

## Ambassador Extraordinary

Anonymous  
Katherine & David Bradley  
The Harold S. Geneen Charitable Trust  
Kirkland & Ellis LLP  
Libra Group Social Responsibility  
The Nissan Foundation  
The Pinkerton Foundation  
Verstandig Family Foundation

## Ambassadors

Anonymous  
Erica Berthou<sup>†</sup>  
Blackstone Charitable Foundation  
J. Frank & Susan Brown  
Centerview Partners LLC  
Columbia University,  
International Students &  
Scholars Office<sup>♥</sup>  
Kevin Rinker, Debevoise &  
Plimpton LLP  
Friends of Ram Jagannath  
Global Citizens Association  
Sue Henderson<sup>†</sup>  
The Hurford Foundation<sup>♥</sup>  
The Hyde and Watson Foundation<sup>♥</sup>  
Ram Jagannath  
KPMG LLP  
Leonard & Judy Lauder  
Terrence F. Martell<sup>†♥</sup>  
Claudette Mayer<sup>†♥</sup>  
PwC<sup>♥</sup>  
Russell Reynolds Associates, Inc.  
School of Visual Arts,  
International Student Office<sup>♥</sup>  
Shearman & Sterling LLP  
Snacks Family Foundation  
William & Cora Sterling<sup>♥</sup>

## Consul Generals

Advance  
Bradlee A. Benn<sup>†</sup>  
Andrea Moo-Young Bermudez<sup>†</sup> &  
Jorge Bermudez<sup>♥</sup>  
Blitzer Family Foundation  
Nancy & Frank Bynum  
Comcast Corporation  
Creighton Condon<sup>†</sup>  
Fashion Institute of Technology,  
SUNY<sup>♥</sup>  
Fireblocks  
The Frankfort Family Foundation  
JPMorgan Chase Foundation  
René Kalonji<sup>†</sup>

Jon & Kristy Korngold  
Yannis Kotziagkiaouridis<sup>†</sup>  
Danielle Li<sup>†</sup>  
NBC News NOW  
New Jersey City University<sup>♥</sup>  
New York University, Office of  
Global Services<sup>♥</sup>  
Okapi Partners LLC  
SAGE Publishing  
Megan & Ben Shaoul  
Steven Starker & Evan  
Seidenstein, BTIG  
The Starr Foundation  
Graves Tompkins  
Elise van Oss<sup>†♥</sup>  
The Malka Fund  
World Education Services<sup>♥</sup>

## Diplomats

Anonymous (2)<sup>♥</sup>  
Dr. John P. Allegrante<sup>†</sup> & Andrea  
Allegrante  
Mariam Assefa<sup>†♥</sup>  
Mike Bingle  
Michael T. Cohen, Colliers  
Fenway Sports Group  
Georgia Garinois-Melenikiotou<sup>†</sup>  
Goldstein and Cheung LLP<sup>♥</sup>  
David W. Heleniak<sup>♥</sup>  
Carrie & David Marriott  
MedStar Health  
Mark Pinho  
Catherine Sweeney Singer &  
William M. Singer<sup>♥</sup>  
Margo & Anthony Viscusi<sup>♥</sup>  
Gioietta & Alberto Vitale<sup>♥</sup>  
Walmart  
Maureen White & Steven Rattner

## Consuls

Anonymous (5)  
Roslyn Allison & Bert Lewen<sup>♥</sup>  
Michael Altman  
Madelyn Antoncic, Ph.D.  
Barnard College<sup>♥</sup>  
Deanne Bosnak, The Stable  
Foundation<sup>♥</sup>  
Dr. Marion R. Boulton<sup>♥</sup>  
Michael Chersonson, APR,  
Fellow PRSA<sup>†</sup>  
Jen E. Clarke<sup>†</sup> & Ian Conran  
David Connolly, Playfly Sports  
Seth & Yana Coren  
Jack & Metka Daly  
Regina Degnan<sup>♥</sup>

Deepesh Dhingra<sup>†</sup> & Sophia  
Hudzik  
Marc & Nancy Duber  
Ambassador Bill & Donna Eacho  
Ambassador Edward E. Elson &  
Susie Elson  
Fordham University, Office for  
International Services<sup>♥</sup>  
Diane Terpeluk & Craig Fuller  
Jodi & Marc Ganz<sup>♥</sup>  
General Electric Company  
Anupam Ghose  
Ruth Ann Grant, Andrew &  
Brady Wargofchik  
I-Grace  
Innisfree M&A Incorporated  
Diwakar Jagannath & Karen  
Colangelo  
Tony James  
Joele Frank, Wilkinson Brimmer  
Katcher  
Elizabeth Kannan  
Kean University Foundation  
Paul & Leslie Kiernan  
Mike & Saer Kirkman  
Rachelli & Leon Koffler  
Gisèle & Robert Lapiner<sup>†♥</sup>  
Jane Lauder  
Kelleen Madden  
Daniel Menelly  
Amy & Jaimey Mergler  
Steve & Allison Gushée  
Molkenthin  
Montclair State University<sup>♥</sup>  
Sherry Lee Mueller<sup>♥</sup>  
Natura & Co  
Andrea Nemetz<sup>♥</sup>  
The Raino Family  
Cory & Lisa Rapkin  
George & Gail Hunt Reeke<sup>♥</sup>  
James Rhee & Meg Smith  
Anthony P. Rhodes  
Ken & Stacy Samet  
Frederick W. Schoenhut  
Robert & Monique Schweich<sup>♥</sup>  
Judith Selkowitz  
Seton Hall University<sup>♥</sup>  
Margaret & Kenji Shiba<sup>♥</sup>  
Katherine Shirrell  
Sprintax  
Emily & Scott Stackman  
St. Francis College<sup>♥</sup>  
David A. Stonehill & Rock  
Mountain Capital  
The Tang Fund

# THANK YOU TO OUR SUPPORTERS

Teachers College, Columbia University ♥

Ariel & Michael Tiedemann  
Dr. Linda Bradley Tiernan  
Tracey & Richard Travis  
Amy & Jason White  
Jen Zachary  
John & Kathy Zogby  
Mr. & Mrs. Alan Zuccari

## Attachés

Anonymous (2)  
Emily Altman  
Flora K. Bloom, EdD  
Anton I. Botha  
Olivier Bottrie  
Marilyn Carlson Nelson  
Tony & Michaela Claudino  
W. Don Cornwell  
Prof. Jasmin (Bey) Cowin, EdD  
CUNY Graduate School of Public Health and Health Policy  
Shahram Dabiri  
Maria Eduarda de Sa Cavalcanti  
Fairleigh Dickinson University ♥  
Dr. Egidio Farone  
John & Olivia Farr  
Kenneth Forde ♥  
Rosa S. Kelley  
Bicky & George Kellner ♥  
Lori & Rick Landgarten  
Georgia Levenson Keohane & Nat Keohane  
Manhattan School of Music  
Dr. Miguel Martinez-Saenz  
Steve Messina  
Gordon & Heide Miller ♥  
Monmouth University  
Pace University ♥  
Pamela & Douglas Paul ♥  
Béatrice Philippe & Zoltan Hankovsky ♥  
Pratt Institute ♥  
Richards, Layton & Finger, P.A.  
Carla Schmitzberger  
Barry F. Schwartz  
The Segal-Ellis Family Fund  
Seton Hill University  
Patrick M. Simonnet ♥  
David & Joan Steinberg ♥  
Colin & Sarah Stewart  
Barbara Apple Sullivan  
Whitney & Susan Tilson

Shahab Vagefi  
Sharon Wyse ♥

## Delegates

William L. Bernhard ♥  
Alan J. Brody  
Robert & Patricia Carey  
Joe & Jaime Cohen  
Mary Immaculate College, Limerick, Ireland  
Katie Embree  
Stephen Ferst  
Virginia & Johnny Freire ♥  
Hofstra University ♥  
Hostos Community College  
Yoni Komorov  
Tamour Kousha  
Zsafia & David Lange  
Dr. Ruth Lubic  
Bernard Lumpkin & Carmine Boccuzzi  
Robin McClellan  
Ken & Barbara McGrory  
New York School of Interior Design  
Jane Pauls  
Michel & Louise Perez ♥  
Jessica Pliska ♥  
Rutgers, The State University of New Jersey ♥  
Michael B. Sperling ♥  
Genevieve & John Tietjen  
Linda Tobash  
Kaori Uchisaka †  
Ullman Communications LLC  
Winston R. Von Engel ♥  
Dr. Portia Williams

## Envoys

Anonymous (3) ♥  
Charles & Maryan Ainsworth ♥  
Fram & Jeanine Akiki  
AmazonSmile Foundation  
Meenakshi Ambardar  
Fernanda Andre  
Sandra Baron  
Dina Amin & Sherif Barsoum  
Brydie-Leigh Bartleet  
Jan Bronson ♥  
John Cannon  
Norm Champ  
Dan & Cynthia Clifford ♥  
Loren Coleman  
Amanda Cunningham

Janice Cuttingham  
Arlene Demirjian  
Michelle Desikan  
Asya J. Dinets  
Constance Dondore  
Annette Eikerenkoetter  
Hamid Elmyar  
Martha Appelbaum & Paul Feltman ♥  
Heidi Fiske ♥  
James R. Ford  
Helen Gaudette  
Dr. Nada Beth Glick  
Cameron Goldberg  
Jessica Greenstein ♥  
John P. Grundman ♥  
Molly Hampton  
Carolina Hojaij  
Marigold S. Holmes  
Barbara Iason & Robert Buford  
Earl J. Klein  
Alexandra Kotronis  
Larry Krause  
Richard Larschan & Laurence Moscato  
Myung-Soo Lee, PhD  
Helen Leonard  
Dr. Richard O. Lundquist  
Hiroyuki Matsubara  
Diana McElfresh  
Tanya Meléndez-Escalante  
Kate Miele & Ben Hedin ♥  
Sara Miller McCune  
Richard Mitten  
Yevgen Nazarenko  
Barbara Rapoport ♥  
Mary Jean Ribas  
Marjory E. Searing  
Isaac & Jacqueline Shapiro  
Sanju Shrestha ♥  
Mary M. Shuford ♥  
Tom & Sara Silbiger ♥  
Dr. Dorothy Meadow Sobol ♥  
Lindsay Alexandre Stevens  
Jim Stevens  
Dr. Satoshi Takahashi  
Christopher Tingle  
Laura Valeri  
Hendrik G. van Oss  
Elys Vasquez-Isan  
Elena Dinets & Leonard Vidrak  
Jeffrey von Arx, S.J. ♥  
Chris & Ed Walsh  
Gary Weinberg



# COMING TOGETHER: THE ANNUAL ONE TO WORLD FULBRIGHT AWARDS DINNER

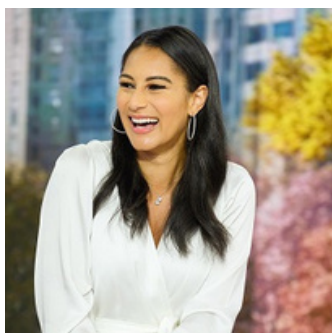


Each May, we hold a signature event to showcase our accomplishments and celebrate our incredible supporters. It's an opportunity to not just raise funds to support our work, but to connect with each of you as our closest friends.

This year, we were thrilled to return to our first in-person gala since 2019 at the Plaza Hotel on May 24, 2022. With 250 guests representing international business, education, the arts, and international affairs and government, it was a wonderful opportunity to highlight the power of coming together and creating connections.



We were thrilled to honor **Ram Jagannath**, Senior Managing Director, Blackstone; **George M. Logothetis**, Chairman and CEO, Libra Group; **Morgan Radford**, Anchor / Correspondent, NBC News; and **Toni G. Verstandig**, Co-Founder and Executive Director, Verstandig Family Foundation.



Our program was further enriched by current Fulbright grantees studying at local colleges and universities, who presented the awards to our honorees. These future global leaders shared their perspectives and experiences here in the U.S., and included the following individuals: Jatin Mohan, from India, studying Musicology at the Graduate Center, CUNY; Martina Novakova, from Bulgaria, studying Arts at New York University; Carla Nudel, from Argentina, studying Journalism at New York University; Iris Patra, from Greece, studying Negotiation and Conflict Resolution at Columbia University; and Ilyssa Yahmi, from France, studying Political Science at Temple University.



We'd like to thank our Board Members, including our Event Co-Chairs, Erica Berthou, Partner, Kirkland & Ellis LLP; Creighton Condon, Partner and Senior Partner, Emeritus, Shearman & Sterling LLP; Georgia Garinois-Melenikiotou, Former Executive Vice President, Corporate Marketing, The Estée Lauder Companies Inc.; and Sue Henderson, President, New Jersey City University. We'd also like to thank our sponsors for their generosity, and all of our incredible guests for joining us for this unique celebration. We look forward to celebrating with everyone again in-person for our future events.

Visit [onetoworld.org/dinner2022watch](https://onetoworld.org/dinner2022watch) to view a recording of the event. If you'd like to learn more about joining us for our next event, contact us at [development@onetoworld.org](mailto:development@onetoworld.org), or at (212) 431-1195.





**“As a scholar, it is nice to interact with people from other areas. As a citizen, even better to interact with people from other countries. I think that the group helps us develop a sense of community that goes beyond our local attachments.” -Fulbright Scholar from Brazil**

**“When we are able to welcome students to our home, getting to know one another in an informal, interpersonal and comfortable setting—especially as we share a meal—we are also able to share our cultures in a meaningful way. To have the opportunity to do this is not only a pleasure, but an honor.”  
-NYC host**

**“One To World is helping me to become a leader and an incredibly social person. I feel that participating in programs with One To World has definitely boosted my confidence and helped me connect with so many other students from all over the world.”**

**-Fulbright student from Mauritius**

**“I have encountered and experienced things that I never would have without One To World. I, as one person, got connected to the entire world because of One To World.”  
-International student from the Republic of Congo**

# OUR MEMBERS

In 2021-2022, One To World is proud to have partnered with the following institutions in supporting international students:

Barnard College, Columbia University

Baruch College, CUNY

Baruch College, Weissman Center, CUNY

Berkeley College

Borough of Manhattan Community College, CUNY

College of Arts and Sciences Advising Center, NYU

College of Staten Island, CUNY

Columbia University

Drew University

Fashion Institute of Technology, SUNY

Fordham University

Goldstein & Cheung LLP

Hofstra University

Hunter College, CUNY

Institute of International Education

John Jay College of Criminal Justice, CUNY

LIM College

Marymount Manhattan College

Montclair State University

New Jersey City University

New York Medical College

New York School of Interior Design

New York University

Pratt Institute

Rutgers University, Newark

Rutgers University, New Brunswick

School of Visual Arts

Sotheby's Institute of Art - New York

St. Francis College

St. John's University

Stevens Institute of Technology

Suffolk County Community College, SUNY

Teachers College, Columbia University

The Art Student League

The New School

Touro College

Wagner College

World Education Services, Inc.

Yeshiva University



# HIGHER EDUCATION COMMITTEE

Laura Arthur  
Drew University

Tamara Cunningham  
New Jersey City University

Stephen Ferst  
College of Staten Island, CUNY

Salvatore C. Longarino  
Fordham University

Samantha Lu  
Columbia University

Deirdre Sato  
Fashion Institute of Technology, SUNY

# OUR BOARD OF DIRECTORS

## **Chair:**

Creighton Condon

*Partner & Senior Partner Emeritus*

*Shearman & Sterling LLP*

Jen E. Clarke

*Executive Director*

*One To World*

*Ex Officio*

## **Vice Chair:**

John Allegrante, PhD

*Charles Irwin Lambert Professor of*

*Health Behavior and Education*

*Teachers College, Columbia University*

Deepesh Dhingra

*Manager of Special Exhibits*

*Liberty Science Center, NJ*

Georgia Garinois-Melenikiotou

*Retired EVP, Corporate Marketing*

*The Estée Lauder Companies*

## **Treasurer:**

Terrence F. Martell, PhD

*Saxe Distinguished Professor of Finance*

*Baruch College, CUNY*

Sue Henderson, PhD

*President*

*New Jersey City University*

## **Secretary:**

Kaori Uchisaka

*Director, International Student Office*

*School of Visual Arts*

René Kalonji

*VP, Business Technology Optimization*

*J.P. Morgan*

Mariam Assefa

*Former Executive Director*

*World Education Services*

Yannis Kotziagkiaouridis

*Chief Analytics Officer*

*Edelman Data & Intelligence (DxI)*

Bradlee Benn

*Executive Director, Deputy Area /*

*Country Manager*

*Russell Reynolds Associates*

Robert Lapiner, PhD

*Professor and Dean Emeritus,*

*School of Professional Studies*

*New York University*

Andrea Moo-Young Bermudez

*Managing Director of Business*

*Development*

*The Byebrook Group*

Danielle Li, JD

*Partner*

*Skadden, Arps, Slate,*

*Meagher & Flom, LLP*

Erica Berthou

*Partner*

*Kirkland & Ellis LLP*

Claudette Mayer

*Former International Banker & Concert*

*Series Manager*

Michael Cherenson, APR, Fellow PRSA

*Executive Vice President,*

*Public Relations*

*SCG Advertising + Public Relations*

Elise van Oss

*Independent Consultant &*

*Career Coach*

*As of June 30, 2022*



# FINANCIALS

## Statement of Activities for the Year Ended June 30, 2021

<b>Without donor restrictions:</b>	<b>6/30/2021</b>
Public support:	
Government grants	\$234,235
Foundation contributions	\$82,500
Individual contributions	\$106,436
Donated goods and services	\$35,275
Benefit income	\$449,205
Revenue:	
Membership fees	\$61,255
Program income	\$58,074
Publication and sponsorship income	\$20,098
Other income	\$37,382
<b>Total public support and revenue</b>	<b>\$1,084,460</b>
<b>Expenses:</b>	
Program services:	
Enrichment programs	\$252,356
Fulbright programs	\$172,328
Global Classroom program	\$253,678
Total program services	\$678,362
Supporting services:	
Management and general	\$134,415
Fundraising	\$253,905
Total supporting services	\$389,320
<b>Total expenses</b>	<b>\$1,067,682</b>
<b>Change in net assets</b>	<b>\$16,778</b>
<b>Net assets - beginning of year</b>	<b>\$367,796</b>
<b>Net assets - ending of year</b>	<b>\$384,574</b>

Note that audited financials for the fiscal year ending on June 30, 2022 will be available soon.

# GET INVOLVED

Your partnership is critical to helping us foster intercultural understanding through face-to-face experiences. This report is a small glimpse at the empowering, inspiring work that you make possible every day.

Your support is vital to the transformational work of empowering global citizens. Make a gift online today at [onetoworld.org/donate](https://onetoworld.org/donate), or call our Development team at (212) 431-1195.

Looking for other ways to get involved?



**Join Our Mailing List:** Sign up for monthly updates from our team about upcoming events, hosting opportunities, program highlights, and more by visiting [onetoworld.org/signup](https://onetoworld.org/signup).

**Become a Host:** If you are interested in welcoming international students to your home or workplace, or want an opportunity to share your community with them, please contact Marisa Silva, Director of Membership & Programs, at [msilva@onetoworld.org](mailto:msilva@onetoworld.org) or call (212) 431-1195.

**Make a Bequest:** This act of generosity ensures One To World can continue our tradition of bringing people together from around the world. Learn more by contacting our Development team at [development@onetoworld.org](mailto:development@onetoworld.org), or by calling (212) 431-1195.

**Attend Our Events:** Held each May, join us at our next One To World Annual Fulbright Awards Dinner! Visit [onetoworld.org/dinner](https://onetoworld.org/dinner) or call our Development team at (212) 431-1195 to learn more. Additionally, some of our enrichment events are available to the wider public. Learn more by visiting [onetoworld.org/events](https://onetoworld.org/events).

**Join the Conversation:** Follow us on social media @OneToWorldInc

